

Destaco Press Shop Solutions

Accelerate Your Productivity



Built on a Strong Foundation



Destaco, a Dover company, is a global leader in the design and manufacture of high-performance automation, workholding and remote-handling solutions. The company serves customers in a variety of end-markets, including the automotive, life sciences, consumer packaged goods, aerospace, industrial and nuclear sectors.

Built on a legacy of more than 100 years, Destaco offers a comprehensive portfolio of products designed to engineer precise movement, placement and control solutions that drive productivity and uptime for manufacturers around the world. The Destaco family of products consists of industry-leading brands such as Destaco Manual Clamps, Power Clamps, and End Effectors; CAMCO™ and Ferguson™ Indexers; Robohand™ Grippers; and CRL™ Manipulators and Transfer Ports.

Destaco is based in Auburn Hills, Michigan, U.S.A. The company has more than 800 employees with 13 locations, in 9 countries, across the Americas, Europe and Asia.

Destaco is part of Dover Corporation, a diversified global manufacturer with annual revenues of \$7 billion. The company delivers innovative equipment and components, specialty systems and support services through four major operating segments: Energy, Engineered Systems, Fluids, and Refrigeration & Food Equipment. Headquartered in Downers Grove, IL, (NYSE: DOV)

More information is available at destaco.com and dovercorporation.com

Focusing all our Resources

New Product Development

Destaco has dedicated resources to design and build the next generation of products and solutions

Customer and Technical Service

Destaco has industry leading global support to address any product and application concerns you may have

Design Tools

Destaco provides an extensive CAD library, sizing software, and online tools to support our global customers



Our Insight Working for You

Application Engineering

We utilize our expertise and complete portfolio of products to create solutions that fit our customers' needs and applications

Custom Solutions

If our off-the-shelf solutions don't fit, we will partner with our customers to develop products that will



End Effector Solutions

Speed Matters

Destaco partners with its customers to design a complete end effector and automation solutions to work within the different types of presses and processes, including:

- Servo press
- Robot crossbar
- Feeder crossbar
- Robot tandem
- Tri-axis transfer



Applications



Press Room/Stamping



Assembly



Welding



Hot Forming



Plastic Injection Molding



CNC/Machining

Accelerate® Digital Solutions

Destaco's Complete Accelerate Digital Solution System helps customers to not only speed up the design process, but reduce the amount of risk and cost associated with press downtime resulting from unforeseen collisions or issues, not captured in the typical design process.



Destaco provides digital solutions for a fast-paced manufacturing process, designed to "Accelerate your Productivity".

Accelerate® Vision Virtual Reality Build Tool

Using Destaco's Accelerate Vision VR Build Tool at the beginning of the design process helps reduce the number of interactions needed, resulting in less die and end effector tooling changes, shortening the process, while providing additional analysis and accuracy.

- Precisely build an end effector based on customer supplied model
- Provide detailed information and data to die makers
- Die makers are able to streamline their design and review process



Destaco VR Design Process



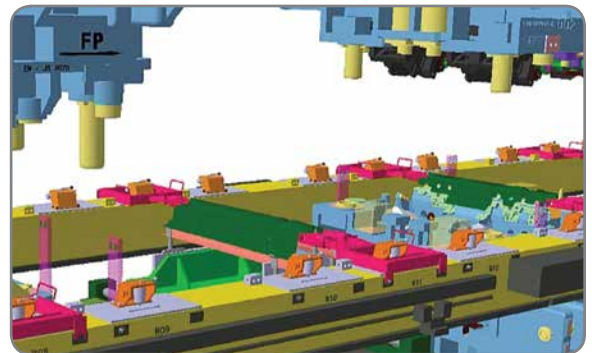
Typical Design Process



Digital Design and Simulation

Destaco is able to provide volumetric analysis to assist in die design. Upon the die design review, Destaco can create complete process simulations.

- Key analysis and simulation, capturing interface positioning
- Collision checking of die, press, automation, and tooling
- Digital simulation using DELMIA™
- Maximize press speed



Robot Assisted Build and Validation

Destaco can accurately build and validate the end effector tool utilizing robot-assisted production cells. With the help of the robot, Destaco can increase the precision in which parts are built.

- Laser validation confirms all measurements and compliance with approved designs
- Reduced installation time as a result of an accurately built tool
- No need for stage sample or 2D drawings



Accelerate® Collection

The Accelerate® Collection is a range of products designed to help make stamping press operators speed up their production lines with higher efficiencies. The Accelerate product line was developed with our customers to address a number of issues experienced in the field. Working with our customers helped to bring innovative new products to the market, which in turn helps them produce more stamped parts per hour, while reducing moment forces and overall system wear and tear.



Accelerate® Lightweight Tooling

This is a complete end-of-arm tooling system designed to offer customers a lightweight, flexible solution for press shop automation. Accelerate tooling can be used in traditional and high speed saddle crossbar, interpress crossbar and tri-axis press lines, as well as lower nest tooling and fixtures.

- Constructed with high-strength aluminum
- 50% lighter than standard round tooling



Accelerate® Polyurethane Vacuum Cups

The PU Series vacuum cups are made of durable long-lasting polyurethane, and feature high friction, anti-slip treading. This material and tread combination gives these cups an excellent sealing capability with a fast firm grip, a long shelf life, and improved shape memory retention.

- Designed to handle higher acceleration/deceleration speeds
- Operating temperature: 50-122°F [10-50°C]



Accelerate® Press Room Sheet Metal Grippers

This 84N Series grippers is half the weight and more compact, with faster actuation — when compared to our closest competition — without sacrificing grip force which measures up to 1000 N at 5 bar.

- Two types of grippers are available, offering fixed lower jaw, 90° and chisel jaws, adjustable tips and fixed block inserts
- Complete line of gripper mounts specifically designed to work seamlessly with the lightweight tooling components



Accelerate® Plastic Proximity Switch Mounts

These proximity switch mounts are made of high strength glass-filled nylon material. They are designed to withstand the high sensitivity of aluminum sensing proximity switches used in robotic pick-and-place material handling lines.



Tool Changers and Compliance Devices

Automatic and Manual Tool Changers allow different tooling configurations to be used with one robot to accommodate multiple applications and parts.

- Lightweight to heavy payload solutions
- Multiple styles of tool changers to choose from
- Variety of air, electric and vacuum utilities supported
- Advanced locking mechanism to minimize deflection after coupling



World Tool Round Tooling

Destaco World tool components can be configured to handle parts of any size and shape, and can be re-used for future applications.

- Offered as a tapered boom tube or bayonet boom
- Several direct mount adaptors available
- Can be used with Accelerate Lightweight tooling system



Destaco Vacuum Products

Destaco offers a wide range of vacuum products to fit the needs of the customer for safe and efficient part handling applications.

- Standard and high temperature vacuum cups
- ARV® auto release venturi and vacuum generators
- Mag-Lift part lifting magnets



Destacker products

Destaco offers products designed for destacking applications, providing long lasting reliable performance.

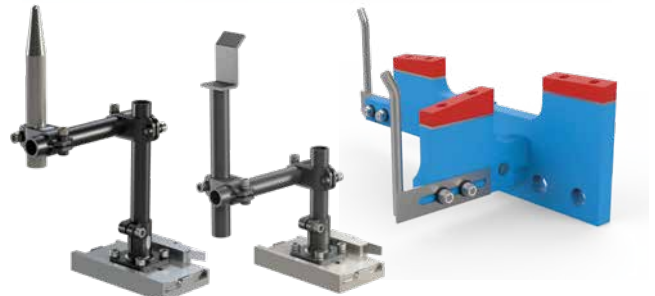
- Double blank detector spring mounts available features an orbital design for compliance to blanks
- Destacker stress relieving vacuum cups provide low impact part release during pull-off



Lower Tooling Components

Lower tooling components can be used with Accelerate® lightweight tooling to create modular idle or press nest stands to hold any sized part between processes. Custom solutions can be made to more precisely fit your application needs.

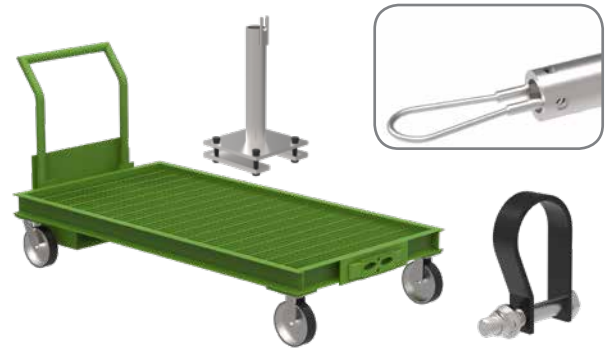
- Neoprene and urethane nest blocks
- Lower nest mount adapter and receiver
- Blue slice nylon nesting designed to fit exact contour of part



Tool Storage

Destaco tool storage products hold multiple end effector tools when transporting to and from the press line, and for storage when tools are not in use.

- Tool storage carts and storage cans
- Tool hangers and hanger straps



Die Storage Components

Destaco has developed special urethane compounds that have been incorporated into die storage blocks that were previously made using all steel construction. Rollers are available in a cushion design where maximum protection from shock loads is required and noise, scratch and dent free service is a necessity.

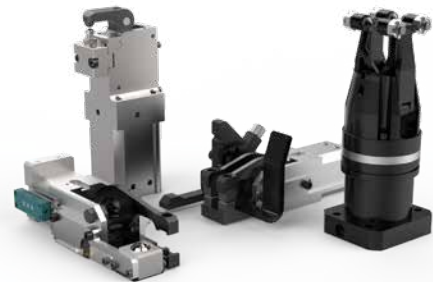
- Urethane Die Storage Blocks greatly reduce scratching and damage to parts and die surfaces
- Rollers are made of oil and cut-resistant neoprene and nitrile material



Sheet Metal Grippers

Destaco sheet metal grippers are offered in a wide variety of mounting, jaw and tip configurations. They provide long term reliability with minimal maintenance.

- Cam-actuated and toggle-lock mechanism
- 90 degree jaw option available



Manual and Pneumatic Toggle Clamps

Destaco manual and pneumatic light-duty clamps are built to last for years of service, and designed to keep your workpieces in place. These products are ideal for testing and check fixture applications.

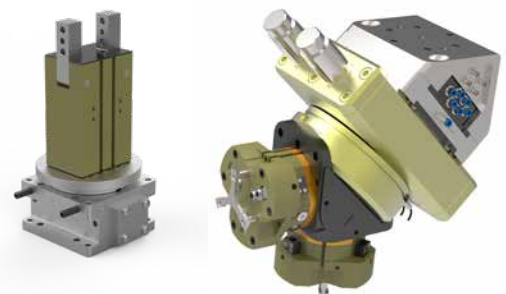
- Heavy-duty and stainless steel models available
- Destaco® Toggle-Lock Plus available on select models



Automation Grippers and Rotaries

Destaco's Robohand products are engineered for reliability and long life to ensure maximum production uptime. These products can be used with end effector and sheet metal gripper products for an automated solution in tri-axis press applications.

- Parallel and angular, two and three jaw gripping solutions
- Space-saving, low-profile rotaries for precision positioning





GLOBAL LOCATIONS

NORTH AMERICA

Corporate Headquarters

Auburn Hills, Michigan
Toll Free: 1.888.DESTACO
Marketing: marketing@destaco.com

Global Technology Center

Auburn Hills, Michigan
Tel: 1.248.836.6700
Customer Service: customerservice@destaco.com

Mt. Juliet, Tennessee
Tel: 1.888.DESTACO
Customer Service: customerservice@destaco.com

Wheeling, Illinois
Tel: 1.800.645.5207
Customer Service: camco@destaco.com

Red Wing, Minnesota (Central Research Laboratories)
Tel: 651.385.2142
Customer Service: sales@centres.com

ASIA

Bangkok, Thailand
Tel: +66-2-326-0812
Customer Service: info@destaco.com

Shanghai, China
Tel: +86-21-6081-2888
Customer Service: china@destaco.com

Bangalore, India
Tel: +91-80-41123421-426
Customer Service: india@destaco.com

EUROPE

Oberursel, Germany
Tel: +49-6171-705-0
Customer Service: europe@destaco.com

Sainte Florine, France
Tel: +33-4-73545001
Customer Service: france@destaco.com

Wolverhampton, United Kingdom
Tel: +44-1902-797980
Customer Service: uk@destaco.com

Sant Boi de Llobregat, Spain
Tel: +34-936361680
Customer Service: spain@destaco.com

Uithoorn, Netherlands
Tel: +31-297285332
Customer Service: benelux@destaco.com